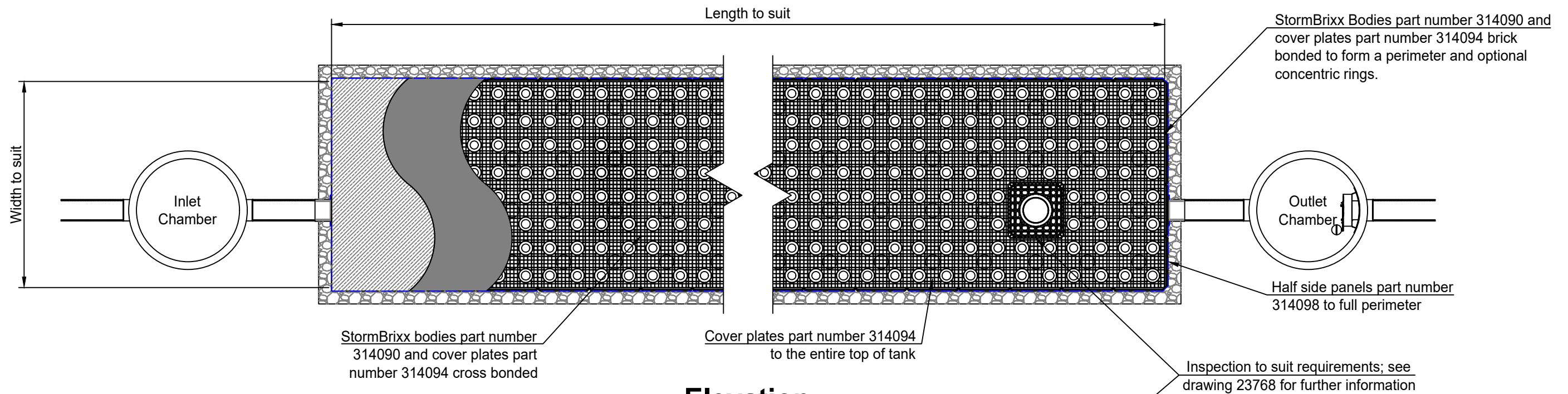
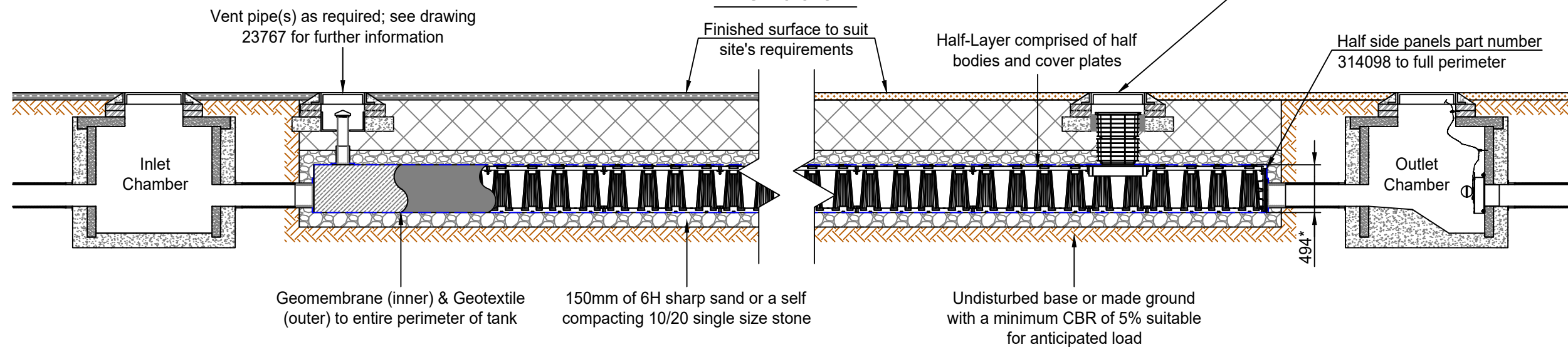



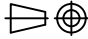
Plan



Elevation



* 494mm overall construction depth corresponding to 478mm for purposes of establishing overall volumes

Minimum cover depths ⁽¹⁾ over the top of ACO StormBrixx SD		(1) Assumed 27° load distribution angle through fill material and overlaying surface asphalt or block paving (2) Please check minimum frost check cover depths for geographical location (3) Minimum cover depth to avoid accidental damage from gardening/landscaping work (4) Occasional trafficking by refuse collection or similar vehicles (typically one per week)	A	05/02/19	Initial Issue	P.J
Location	Minimum cover depth (m) ⁽²⁾		Version	Date	Description	Name
Non-Trafficked areas i.e landscaping	Please consult ACO		 ACO Technologies plc	ACO Business Park Hitchin Road Shefford Bedfordshire SG17 5TE, UK Tel: 01462 816666 www.aco.co.uk	Drawing Number: 23770	Revision: A
Car parks, vehicles up to 2500kg gross mass	Please consult ACO				Title: ACO StormBrixx SD Attenuation 0.5 Layer Tank Installation Detail Drawing	
Car parks, occasional vehicles greater than 2500kg ⁽⁴⁾ mass	Please consult ACO					
Occasional HGV traffic up to 44000kg GVW (HA loading)	Please consult ACO				Projection: ISO-A 	Format: A3
			Created by: P.J	Released by: O.B	Units: mm	Scale: 1 : 50
			Created at: 05/02/19	Released at: 05/02/19	Information contained in this drawing is copyright property of ACO Technologies plc. Any reproduction in part or whole without written permission of ACO Technologies plc is prohibited	
			Replacement for: -	Replaced by: -		
					Sheet: 1 of 1	